

# CERTIFICATE OF LOCATION OF GOVERNMENT CORNER

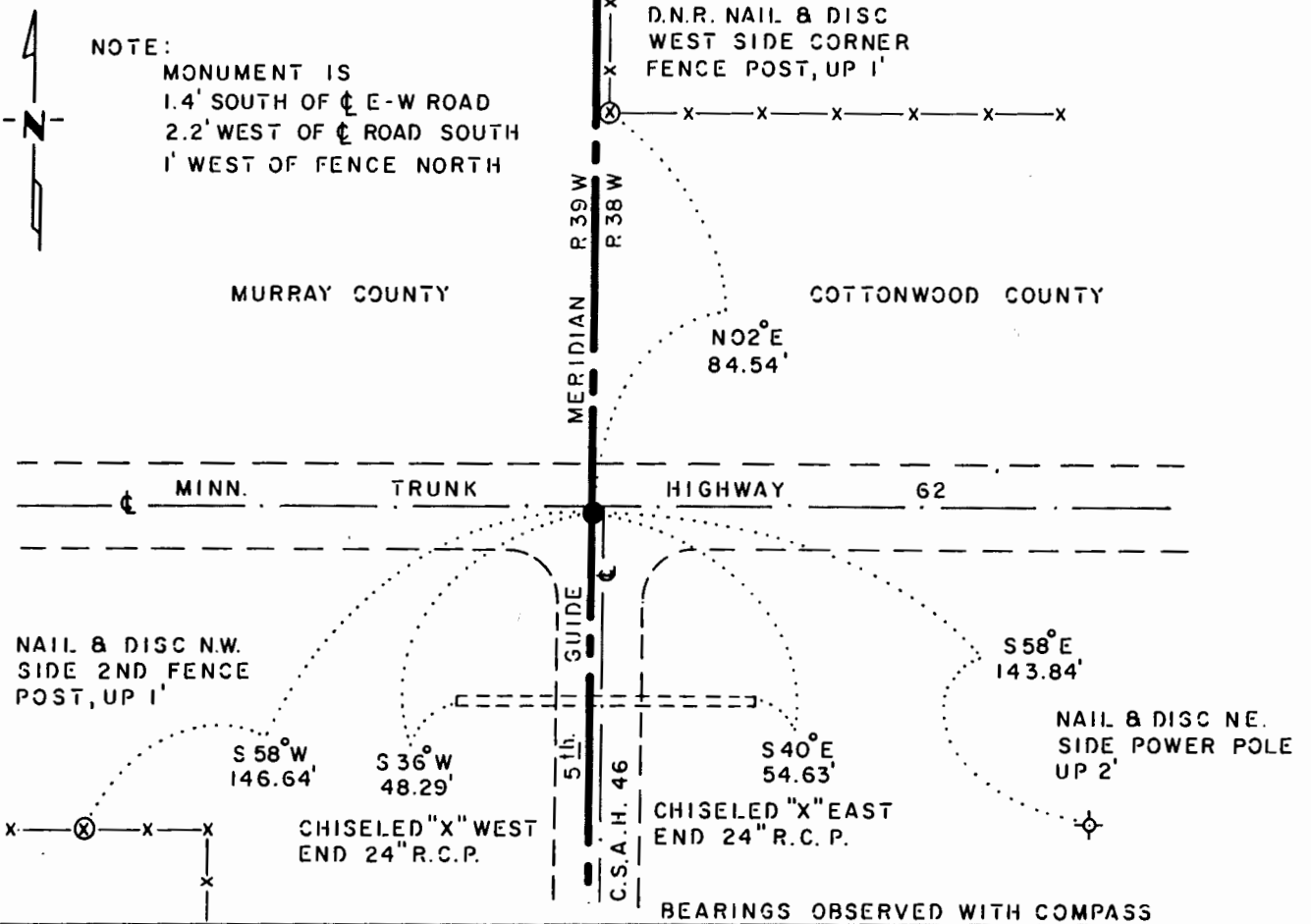
NORTHEAST Corner of Section 36, Township 105 N, Range 39 W, 5<sup>th</sup> P.M.

STATE OF MINNESOTA, County of MURRAY

At the corner location shown on the sketch:

- On 4-28-83 found a CAST IRON MONUMENT DOWN 0.2'  
DATE
- left monument as found,  lowered monument,  removed monument (explain)
- On \_\_\_\_\_ placed a \_\_\_\_\_  
DATE

### SKETCH OF REFERENCE TIES



Statement of evidence relative to this corner location is on back of page.

J. B. M. 3-21-85  
G-158

I hereby certify that this document and the data contained herein was prepared by me or under my direct supervision.

Bruce W. Sheppard 12/20/85  
SIGNATURE DATE

Registration No. 17003

- Land Surveyor,  Professional Engineer
- County Surveyor,  County Engineer

OFFICE OF THE COUNTY RECORDER

County of \_\_\_\_\_

I hereby certify that this document was filed in the Co. Recorders office at \_\_\_\_\_ M. on the \_\_\_\_\_ day of \_\_\_\_\_ A.D., 19 \_\_\_\_\_

County Recorder \_\_\_\_\_

By \_\_\_\_\_, Deputy

DOCUMENT NO. \_\_\_\_\_

Northeast Corner Section 36, Township 105 North, Range 39 West

This corner was originally established by the U. S. General Land Office survey in 1857. The government notes show:

set post, deposited charcoal, made mound, trench, and pits and planted plum seed northeast and southwest.

In April 1983, the DNR Bureau of Engineering contacted the following for corner information:

Cottonwood County Offices of the Recorder and Highway Engineer  
Murray County Offices of the Recorder and Highway Engineer  
Sioux Engineering of Windom  
Martin Land Surveying of Worthington  
Minnesota Department of Transportation Offices in St. Paul and Windom

The following information was obtained from the Murray County Recorder's Office:

Surveyor's Record Book A on Page 109 contains a survey done in 1891, surveyor not indicated. Survey shows a 2½" by 3½" by 30" cast iron stake at corner.

Surveyor's Record Book A on Page 31 contains a survey made by J. W. Woolstencroft, in 1891. Survey shows a 2½" by 2½" by 30" cast iron stake at corner but does not indicate if found or set.

The following information was obtained from the Cottonwood County Recorder's Office:

Plat 49 contains a resurvey of Township 105 North, Range 38 West done by C. W. Gove, County Surveyor, in 1898. Plat shows that an old corner was found and a 2½" by 2½" by 30" cast iron stake was set.

The following information was obtained from the Office of Sioux Engineering:

A copy of a resurvey plat of Township 105 North, Range 38 West, obtained from Howard Boeck of Westbrook, and done by C. W. Gove, County Surveyor, in 1898, shows a government stake at corner.

The following information was obtained from the Cottonwood County Recorder's Office:

A resurvey plat of Township 105 North, Range 38 West done by C. W. Gove, County Surveyor in 1898, shows corner but does not indicate what was found or set. Corner is shown:

3032 feet from the north quarter corner of Section 31  
1980 feet from meander corner number 1

Surveyor's Record Book 1 on Page 16 contains a survey made by C. W. Gove, County Surveyor, in 1911. Survey shows a cast iron post at corner 3032 feet from the north quarter corner of Section 31.

Northeast Corner Section 36, Township 105 North, Range 39 West

The following information was obtained from the Minnesota Department of Transportation Office in St. Paul:

An old right-of-way map of Minnesota Trunk Highway 62, date not indicated, shows corner but does not indicate what was found or set. Corner is shown at Station 400+00 with the following ties:

- reference point, 40d nail in fence post, North 9° 00' East, 72.0 feet
- reference point, 40d nail in base of blazed fence post, South 31° 00' East, 84.5 feet
- reference point, 40d nail in base of 10" Cottonwood tree, South 22° 00' West, 80.4 feet
- 3040.4 feet from the north quarter corner of Section 31

The present right-of-way map of Minnesota Trunk Highway 62, date not indicated, shows an iron stake in place at corner. Corner is shown at P.I. Station 400+51.6 with the following ties:

- telephone pole, northeast, 135.35 feet
- power pole, east-southeast, 123.33 feet
- telephone pole, northwest, 55.16 feet
- 3033.6 feet from the north quarter corner of Section 31

The following information was obtained from the Minnesota Department of Transportation Office in Windom:

Date not indicated, an aluminum disc in a concrete monument was found at corner down 23 inches. Corner is shown at P.I. Station 400+51.6 and a Minnesota Department of Transportation cast iron monument was set over concrete monument. The following ties are shown:

- copper nail and disc on the west side of a corner fence post, up 1.0 feet, north, 75.12 feet
- copper nail and disc on the north side of a power pole, up 2.0 feet, southeast, 143.90 feet
- copper nail and disc on the north side of second fence post, up 1.0 feet, southwest, 146.73 feet

The following information was obtained from the Murray County Highway Engineer's Office:

The following information was obtained from tie book:

- In 1891, a 2½" by 2½" by 30" cast iron stake is shown at corner.
- In 1896, a 2½" by 2½" by 30" cast iron stake is shown at corner.
- In 1979, an iron pin is shown at corner with the following ties:
  - nail and disc in corner post, southeast, 92.55 feet
  - nail and disc in corner post, north, 75.30 feet

The following information was obtained from the DNR Bureau of Engineering's Office:

In 1953, an iron pin was found at corner. The iron pin was found to be:

- 2640 feet from the north quarter corner of Section 31

Northeast Corner Section 36, Township 105 North, Range 39 West

In 1956, the following information was obtained from the Minnesota Department of Transportation Office in Windom:

A Minnesota Trunk Highway 62 plan map, date not indicated, shows an iron stake at corner down 1.5 feet. Corner is shown at Station 400+51.6 and an aluminum cap in a concrete monument was set over the iron stake. The following ties are shown:

nail and disc in corner fence post, north, 75.0 feet  
telephone pole, southeast, 75.8 feet  
nail and disc in hub, southwest, 99.8 feet  
nail and disc in telephone pole, northwest, 84.8 feet  
set spike down 2 inches over monument

The DNR Bureau of Engineering used the above ties to locate corner in 1956.

In 1968, a spike was found at corner which was set by the County Engineer. The following ties are shown:

M.H.D. nail and disc, east side of telephone pole, southeast, 75.72 feet  
M.H.D. nail and disc, east side of corner fence post, north, 75.16 feet  
M.H.D. nail and disc, east side of telephone pole, northwest, 84.77 feet  
on center line State Highway 62  
in line with center line County Road 19, south  
5674.35 feet to the northeast corner of Section 31

The following information was obtained from the Office of Martin Land Surveying:

In 1983, a Minnesota Department of Transportation cast iron monument was found at corner. Corner is shown:

1.4 feet south of the center line of Minnesota Trunk Highway 62  
2.2 feet west of the center line of road south  
5673.38 feet from the northeast corner of Section 31

In April 1983, the DNR Bureau of Engineering traversed to the area of the corner and found a cast iron monument. Searched for and found record ties as shown on certificate. The cast iron monument was found to be:

3031.53 feet from the north quarter corner of Section 31  
5673.39 feet from the northeast corner of Section 31

Accept the cast iron monument as the location of the corner.

Traverse information is available from the DNR Bureau of Engineering.

60hab